



# Long Beach Community College Bond Management Team

# THE SCOOP



July 2007



CORDOBA CORPORATION

Volume I, Issue 6

### The Scoop

is a monthly publication for faculty, staff, students and the community providing construction updates such as, ground breakings, building completions, and more, on the campuses of Long Beach Community College District.

### In The Scoop:

#### Student Point of View

#### Construction Software

### The Students Check-In

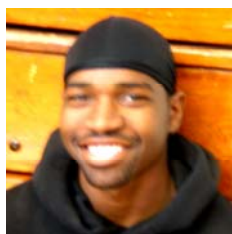
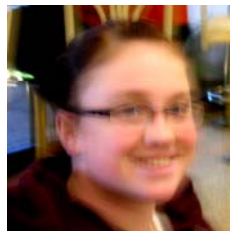
Our students are on their way, getting a start on an educational path toward becoming promising individuals. We set out to get the "student buzz" about the ensuing transformation around the campuses. The following excerpts reflect the thoughts students shared with BMT correspondents about the new construction and upcoming construction projects at LAC and PCC.



**Jay**, age 30, said he's glad to know that South Quad and the Learning Resource Center will be complete by 2008. "The construction is a great idea because it will bring in more students."

"The LAC campus is rocking this year." He hopes he's still here to see all the construction.

**Kristen** age 19 shared, "The bungalow classrooms are no fun. I'm looking forward to the new technology classrooms. They will be fun."

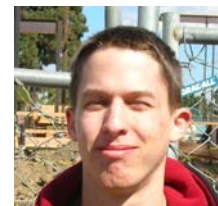


**Kevon**, age 21, was excited about the expansion and the benefits of new classrooms. "I think the construction is great because there will be more classrooms for students."



**Cesar** age 19, art major told us, "The construction that's going on doesn't bother me because I know it's bettering the school."

**Freddy**, age 30, forensic science major, summed it all up. "The campus will look better when South Quad is complete."



**Stephen**, age 21, history major, "The construction is a positive thing. I'm happy to see LBCC moving into the 21st century with smart classrooms.

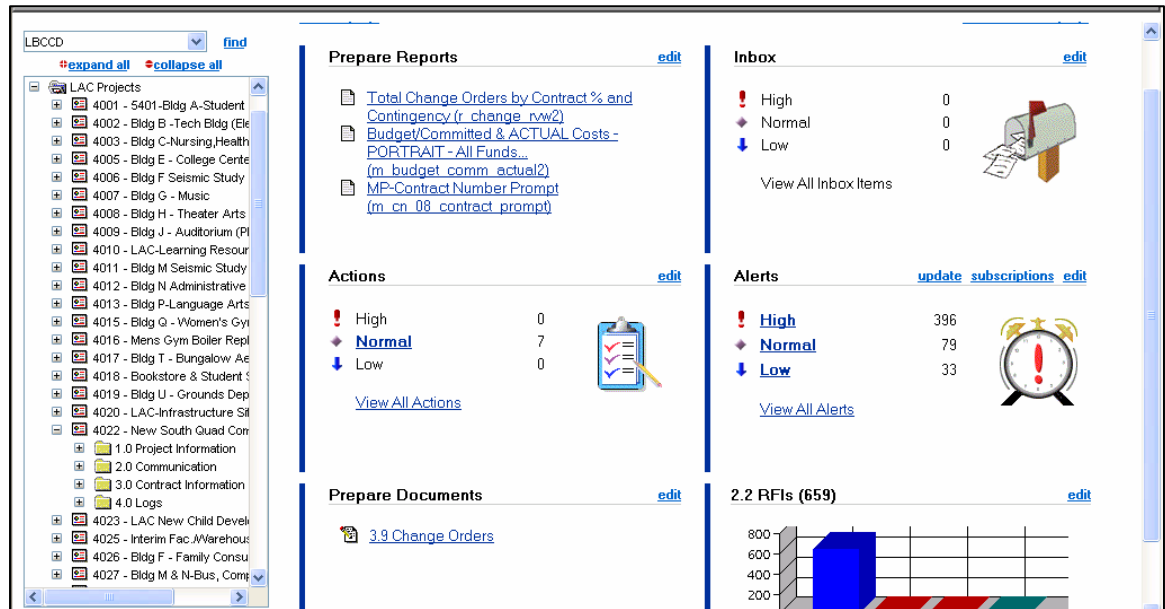
It's very modern and up to date."

The dynamic and inspiring development on campus opens up the future for the most important people here, our students. This timely vision and dedication to this most important goal remains critical to LBCC's edge in servicing the needs of our students and the community. Their input and interest is valuable since their success is the main focus of the College's desire to achieve excellence in the educational environment here at LBCC.

### A+

**"The (LBCC) District's plans for prudent use of Bond Program funds properly consider the students' need for information, and a safe and secure learning environment."**

—Audit report by Moss Adams, LLC regarding the Construction Bond Measure E Performance Audit Report



Contract management workspace and overview

## Construction Software Today

Cordoba's role as the Construction Bond Management Team for Long Beach Community College is to manage all aspects of construction assuring that all projects are on time and on budget. Our role includes preparation, logging and reviewing all documentation relating to the construction projects. This task would be nearly impossible without a software program specifically designed and marketed for today's construction industry. Primavera's "Contract Management" formerly known as "Expedition," was selected by Long Beach Community College and has been a key instrument in the success of our projects.

A vital feature of the program is that it enables our team to track the progress of a project from the design phase through project completion. Documents are logged into the respective modules and recorded in the system for all users to view. Access to the program is based on the user's role and or function to the project whether it be the owner, construction manager, general contractor, architect/-engineer or administrative staff.

Our team monitors project related documents

ranging from proposals, contracts, correspondence, request for information, submittals, and change related documents through the software. It allows a direct interface with the P3 scheduling program. This supplemental feature is a great addition to the software and the capabilities it provides to the team.

Previous versions of Expedition allowed internal network access only which was somewhat limited and hindered productivity. Now with new technology & improvements, it is possible to access the program through the web. This version allows users to log-in remotely from any computer or web connection to view the projects or generate documents. This essentially provides a virtual network amongst all stakeholders on the projects.

In addition, the software generates numerous reports that enable owners and management to track budgets, review cost variances, and see any project changes from a multi-project view or simply a single project view. This has been extremely beneficial for the BMT to maximize our efficiency while minimizing project costs, risks and safety issues.

